

ZENNER Fire Hydrant Meter Check Valve Assemblies

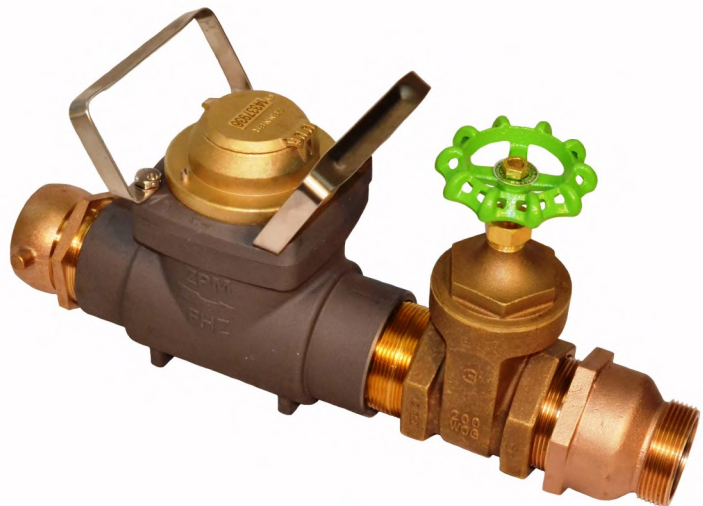
NC2530B-CV 2-1/2" MNST x 3" MIP Nipple with 2" Check Valve & Strainer

INTRODUCTION: ZENNER Fire Hydrant Meter Check Valve Assemblies are designed to be installed on the outlet side of Fire Hydrant Meters. They are easy to install and are made to take the place of existing outlet fire hose nipples. The FHM Check Valve Assembly provides a practical solution to help prevent backflow into the primary water source.

CONSTRUCTION: ZENNER Fire Hydrant Meter Check Valve Assemblies consist of several basic components: brass housing, 2" composite check valve assembly, stainless steel strainer and stainless steel retaining rings.

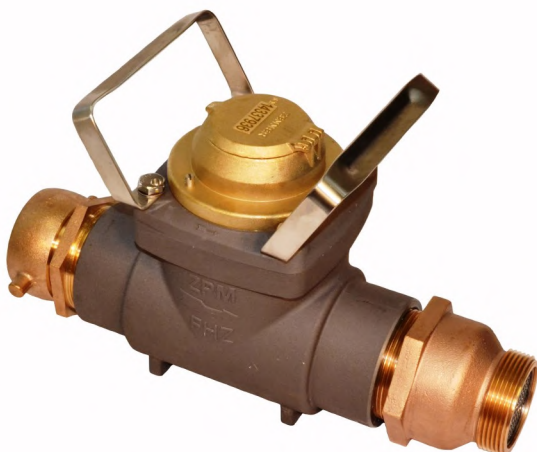
OPTIONS: ZENNER Fire Hydrant Meter Check Valve Assemblies are available in one basic size, 3" MIP x 2-1/2" MNST.

NC2530B-CV



FHZ30S**-GVCV

Zenner Hydrant Meter shown with NC2530B-CV Check Valve Assembly and 3" Gate Valve



FHZ30S**-CV

Zenner Hydrant Meter shown with NC2530B-CV Check Valve Assembly

