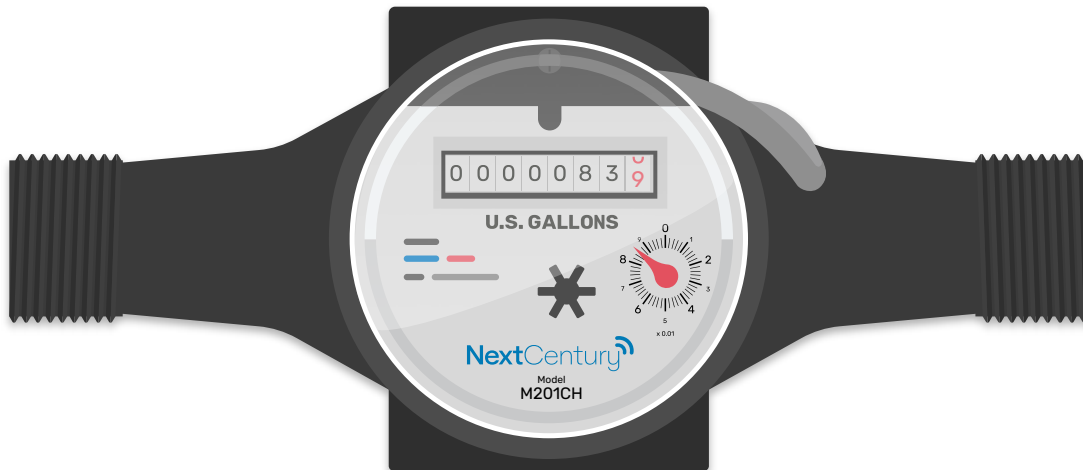


## M201 Series

Multi-Jet Water Meter (3/4")



The **M201 Series** (M201CH & M201C) features advanced multi-jet water metering technology and a durable body design, ensuring best-in-class accuracy.

### Precise & Reliable

Available in both hot (M201CH) and cold (M201C) models, the M201 Series delivers reliable, high-accuracy metering for multi-family and commercial applications. Each meter is rigorously tested to AWWA and NTEP standards, delivering proven accuracy and reliable performance.

### Versatile Installation Options

The M201's adaptable design allows for horizontal or vertical installation while maintaining accuracy and durability. Its flexibility ensures reliable performance in a variety of property layouts.

### Seamless Wireless Compatibility

The M201 is designed for seamless integration with the NextCentury platform using a TR4 Transceiver. Its dedicated mounting plate secures the TR4 in place, ensuring a stable, optimized installation. This design provides reliable performance while maintaining a compact footprint.

### Key Benefits

- Designed for long-term reliability
- Integrates easily with a TR4
- Hot and cold meter models available
- Sealed register prevents tampering
- Best-in-class multi-jet technology
- Manufactured and tested in a state-of-the-art facility
- Quick and easy setup

### Warranty

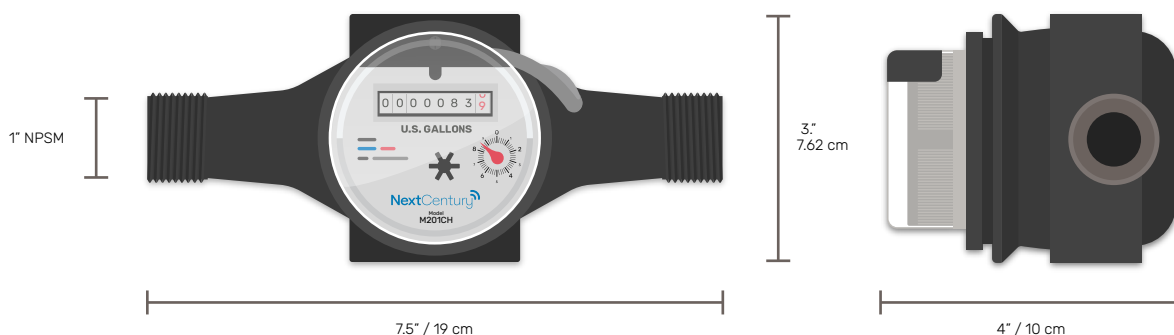
- 5-year standard warranty

# Specifications & Installation Guide



## Specifications

### Dimensions



### Applications

Meter Size	Connection (NPSM)	Lay Length	Max (GPM)
5/8" x 3/4"	1"	7 1/2"	20
3/4" x 3/4"	1"	7 1/2"	30

### Temperature

Model	Water Temperature Range	
M201C	36° F   2° C	105° F   40° C
M201CH*	36° F   2° C	194° F   90° C

\* Fiber gaskets recommended for hot water applications

### Approvals

Meets AWWA C708 accuracy & performance  
 NTEP/CTEP Approval 15-045  
 NSF/ANSI/CAN 61 & 372 certified

### Environment

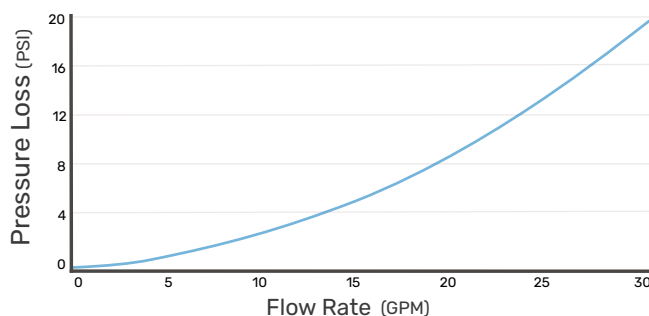
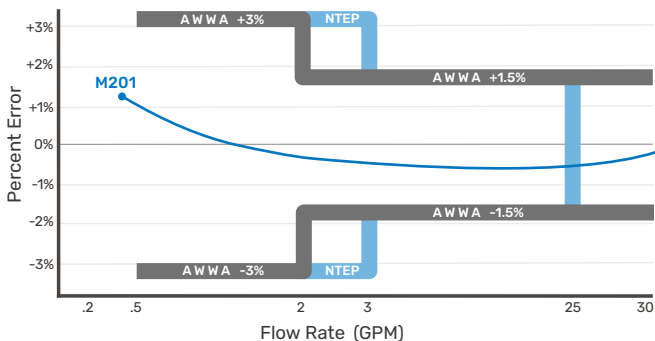
For indoor use only  
 Up to 90% non-condensing humidity

### Performance

Registers flow as low as .2 GPM  
 Full 3/4" size supports up to 30 GPM flow rate

### Pressure

Up to 150 PSI operating pressure  
 Low head loss: less than 7 PSI at 15 GPM



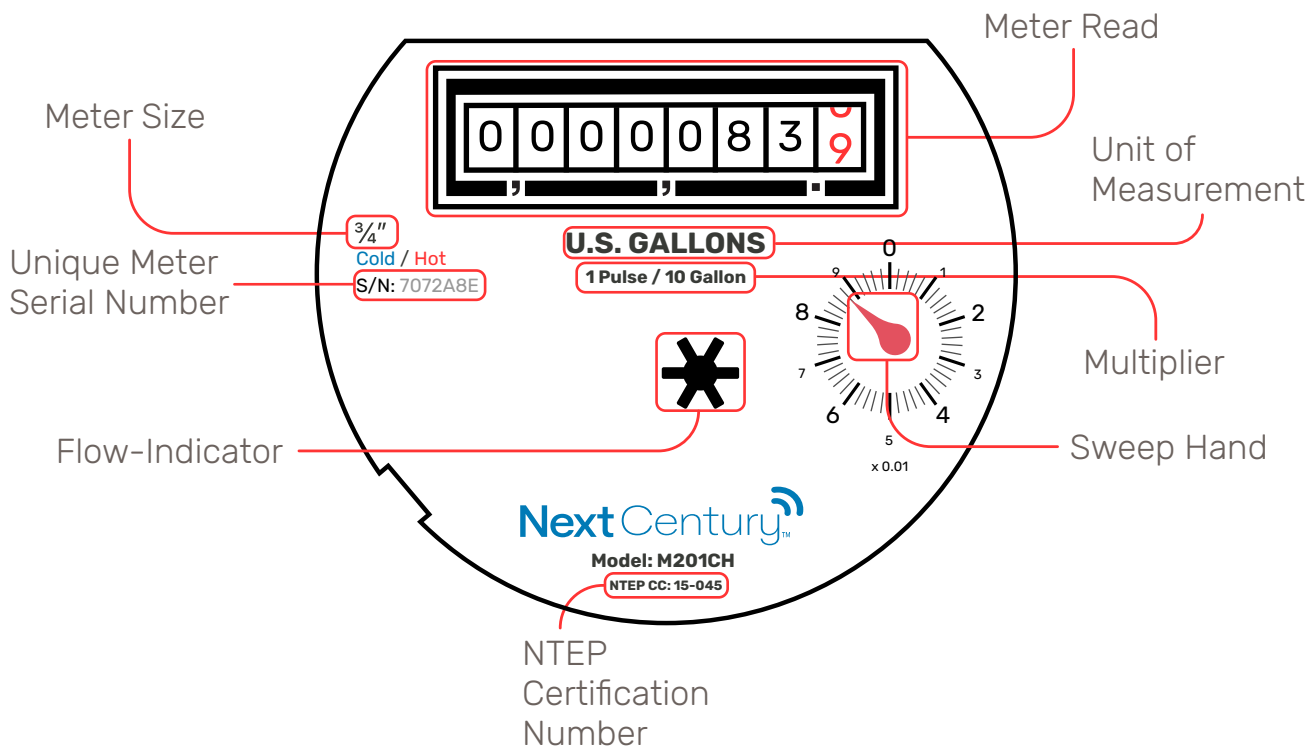
# Specifications & Installation Guide



## Specifications (cont.)

### Meter Label

The following can be found on the face of the M201:



### Outputs

Pulse output - dry contact (1 pulse/10 gallons)

Pre-wired connector and mounting plate for NextCentury TR4

### Warranty

Next Meters warrants the M201 Series meters to be free from defects in materials and workmanship for a period of five years from date of manufacture when installed in accordance with these instructions and with limitations as detailed in the complete warranty.

For full warranty information, please refer to the Meter Warranty document.

Due to continuous product improvement and the need to comply with evolving regulations, Next Meters reserves the right to modify product specifications without prior notice.

# Specifications & Installation Guide



## Installation

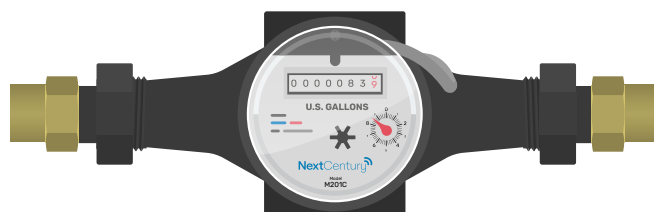
### Qualifying Installations

The meter location must have sufficient finished clearance to allow for reading, inspection, and eventual replacement of the meter.

Building plumbing engineering must comply with local building code and effectively prevent backflow through system design which may include backflow prevention check valves.

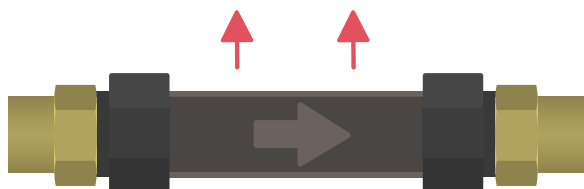
The plumbing system should include a shutoff valve upstream of the meter to allow for future maintenance of the meter and other plumbing components.

Place meter and tighten both ends to a maximum torque of 15 lb•ft. Hold the meter steady to prevent rotation.

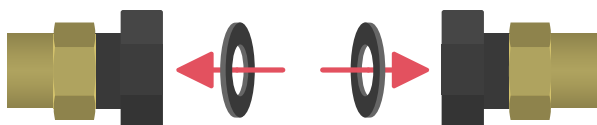


### Supply Line Preparation

Shut off the water line and carefully remove the spacer tube or existing meter from the line.

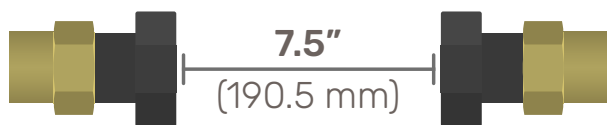


Ensure gaskets are in place and undamaged. Replace if needed. For the M201CH, fiber gaskets are recommended.



### Meter Installation

Verify that the water line is parallel and has enough space for the meter. It should be a distance of 7.5" (190.5 mm).



The meter must be installed in the correct direction of flow. Flow direction arrows are located on both sides and the bottom of the meter.



### Inline Options

When electrical grounding of the water supply line is required, an approved bonding jumper should be installed.

The M201 can be installed horizontally or vertically.

The meter must be installed in a level horizontal orientation with the register facing up or 90° from upright, or in a vertical orientation. The maximum degree of variance from precisely horizontal or vertical is 5%.

Do not install the meter horizontally with the register facing down or at any rotation other than upright/90° from upright.

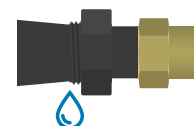


### Pressurizing Line

Before exposing the meter to full flow conditions, ensure all air is expelled from the piping. Gradually turn on the flow to prevent damage to the meter.

After pressurizing, check the coupling connections for moisture to confirm a watertight seal.

The M201 will begin accurately measuring flow once air has evacuated and water has completely filled the line.



### Transceiver (TR4) Integration

The M201 seamlessly connects to a NextCentury TR4 to enable real-time metering and remote monitoring.

Visit [products.nextcenturymeters.com/tr4](https://products.nextcenturymeters.com/tr4) or contact your distributor for more information.



## Testing & Quality Assurance

### Performance in Application

Multi-family and commercial water distribution systems must be designed with careful consideration to prevent pressure spikes that exceed maximum pressure requirements. All plumbing components, fixtures, and appliances typically are required to withstand at 2x the nominal static water pressure.

The M201 is engineered to perform beyond these basic requirements. Its rated maximum pressure far exceeds standard water supply specifications, ensuring that the meter performs with confidence, not just compliance.

### Pressure Endurance Testing

The M201's advanced engineering and pressure endurance extends throughout its lifetime operation. This performance is verified using accelerated-life testing, in which the M201 is pressurized to 300 PSI in cycles 100,000 times (see AWWA C708).

### Design & Material Specifications

The M201 features a rugged meter body made with glass-filled nylon. This high-performance material is built for strength, stability, and long-term durability in demanding environments.

### NSF Testing

The M201 is tested and certified to NSF/ANSI/CAN 61 and 372 standards for drinking water system components. These certifications ensure the meter is free from harmful contaminants and can operate efficiently without posing any health risks.

### Contact Information

For additional information or assistance, please visit our Support Center or contact our Product Support Team:

[support.nextmeters.com](https://support.nextmeters.com)

(844) 538-8203

[support@nextmeters.com](mailto:support@nextmeters.com)