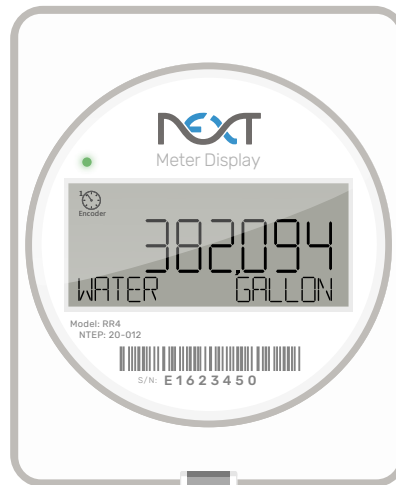


## NextCentury RR4 Remote Reader

High-Visibility Remote Display for Accurate Meter Readings.



The [RR4 Remote Reader](#) provides a high-visibility display for one or two utility meters, making meter readings easier to access. The RR4 supports a wide range of utility meters including water, electric, gas, and thermal meters, displaying readings locally.

### Accurate & Reliable Meter Reading

Equipped with Dual Meter+™ technology, the RR4 enables seamless compatibility with both encoded and pulse-output meters. The unit provides a local display of real-time readings for effortless monitoring. The utility and unit of measure are clearly displayed, ensuring accurate reads.

### Intuitive Display

With a consumer-friendly design, the RR4 ensures accurate and clear interpretation of meter readings. Its high-contrast LCD screen displays utility type, unit of measurement, and meter read data, making it ideal for both residential and commercial applications.

### Certified & Simple

The RR4 is NTEP-certified, meeting compliance requirements for tenant meter reads. Setup and configuration is simple, with an easy-to-use mobile app available for iOS or Android devices.

### Key Benefits

- Compatible with encoded and pulse-output meters
- IP66-rated for indoor and outdoor installation
- Compact and durable design
- Configures via Bluetooth (BLE) using the NCSS Mobile App.
- Supports dual-meter input
- Tamper detection alerts for enhanced security
- NTEP-certified for tenant billing compliance
- Up to 10-year battery life

### Warranty

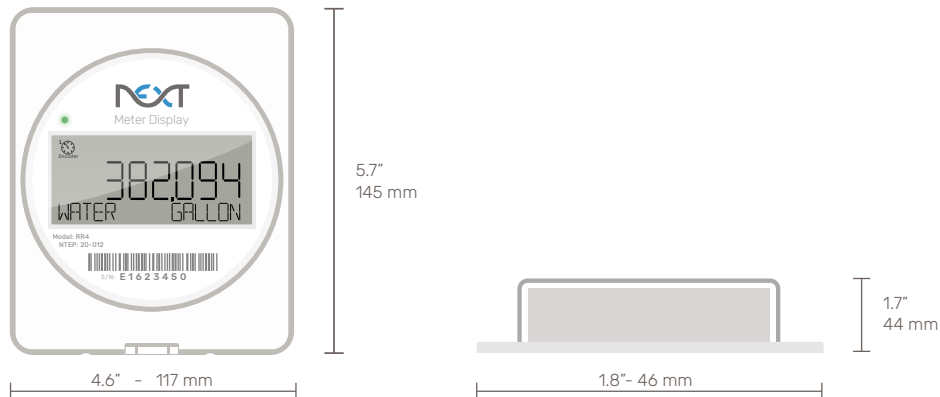
- 3-year standard warranty

# Specifications & Installation Guide



## Specifications

### Dimensions



### Approvals & Compliance

- FCC ID: 2AB8I-RR4
- IC: 20949-RR4
- NTEP Certification: 20-012
- IP Rating: IP66

### Wireless Communication

- BLE – Direct Connect via the iOS or Android mobile device
- NCSS Mobile App used for setup and configuration

### Dual Meter+ Technology

- Supports two encoded or pulse-output meters simultaneously

### Battery & Power

- Pre-installed CR18505 lithium battery (field-replaceable)
- Up to 10-year battery life

### Dimensions & Installation

- Compatible with standard single-gang wall boxes
- Mounting hole spacing: 3.5" (88.4mm)

### Operating Environment

- Temperature range: -4°F to 140°F (-20°C to 60°C)
- Indoor or outdoor installation (non-submersible)

### Compatible Pulse Output Meters

- Supports reed switch, solid-state relay, and open-drain types
- Active voltage sensing: Up to 16 VDC

### Compatible Encoded Output Meters

- Neptune (ProRead, E-Coder, ProCoder)
- Sensus UI-1203 (Sensus, Badger, Kamstrup, and others)
- Elster/AMCO K-Frame (ABB, AMCO, Kent)
- GWF ECO (Unico, Unico2coder)

### Warranty

Next Meters warrants the RR4 Remote Reader to be free from defects in materials and workmanship for a period of three years from date of manufacture when installed in accordance with these instructions and with limitations as detailed in the complete warranty.

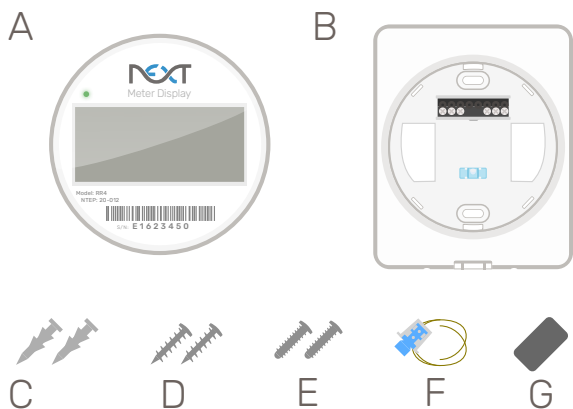
Due to continuous product improvement and the need to comply with evolving regulations, Next Meters reserves the right to modify product specifications without prior notice.

# Specifications & Installation Guide



## Installation

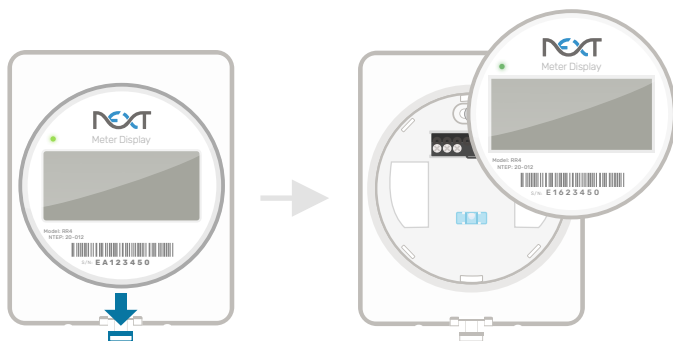
### Package Contents



- A) RR4 Remote Reader
- B) Mounting Plate
- C) Sheetrock Anchors
- D) Wall Mount Screws
- E) Box Mount Screws
- F) Wire Security Assembly
- G) Activation Magnet

### Detach from Mounting Plate

Pull down the security tab to remove the Remote Reader. Do not open the device unless replacing the battery. Disassembly is not required for installation.



### Install the Mounting Plate

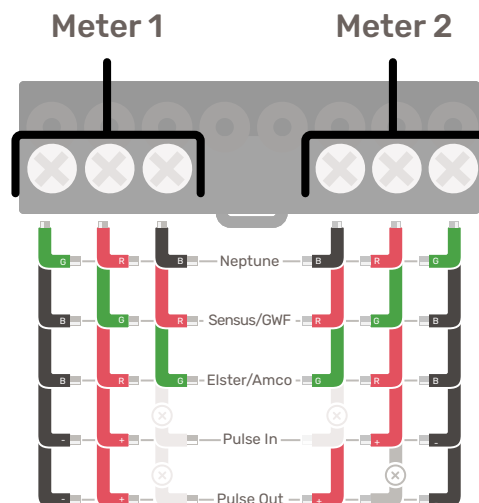
Position the mounting plate at the desired height and use the integrated level for alignment. Use included Wall Mount screws and Sheetrock Anchors to secure the mounting plate.

For optional wall box mounting, route meter wires through access holes and attach to a standard wall box using the Box Mount Screws.

### Meter Wiring

The Remote Reader can be connected to one or two meters. Use Meter 1 (left 3 terminals) and Meter 2 (right 3 terminals) to connect meters to the Remote Reader's mounting plate.

Strip the meter wires to 3/16" (5 mm), insert them into the terminal block, and tighten securely with a PH-1 screwdriver.



To create a tamper-evident seal, the Security Wire Seal can be used according to your installation specifications.

### Programming

The Remote Reader is programmed using the NCSS Mobile App via Bluetooth Direct Connect. The NCSS Mobile App allows for quick, in-field programming and configuration.

### Configuration

The NCSS Mobile App allows technicians to connect wirelessly to the Remote Reader to set the configuration.

Features include configuring the meter's unit of measure and multiplier, selecting the utility type, entering an initial meter read and clearing a tamper alert.





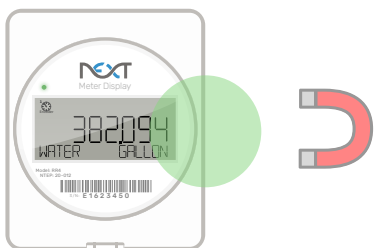
# Specifications & Installation Guide

## Installation (cont.)

### Magnet Activation

Log in to the NCSS Mobile App and open the Direct Connect tool to configure the Remote Reader.

Swipe a magnet past the activation zone to enable Direct Connect mode. A gear icon will appear, indicating the device is ready for configuration.



The Remote Reader can now connect directly to your mobile device via Bluetooth for configuration.

### Tamper

Tamper Alert: Device has been removed from mounting plate



Leak or Freeze Alert: Leak or freezing temperatures currently detected



Low Battery Alert: Replace battery within the next 4-6 months.

### Utility Types

The configured utility type appears in the bottom left corner of the display.

- All Water
- Cold Water
- Hot Water
- Commercial Water
- Gas
- Electric

### Units of Measure

The unit of measure appears in the bottom right corner of the screen.

- gallons (water)
- liters (water)
- cubic feet (water, gas)
- cubic yards (water, gas)
- cubic meters (water, gas)
- kWh (electric)
- Wh (electric)
- BTU (thermal)

### Contact Information

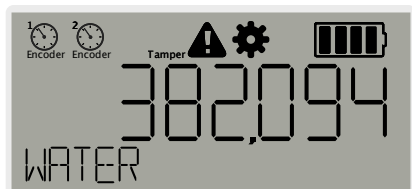
For additional information or assistance, please visit our Support Center or contact our Product Support Team:

[support.nextmeters.com](http://support.nextmeters.com)

(844) 538-8203

[support@nextmeters.com](mailto:support@nextmeters.com)

### LCD Display



The Remote Reader will cycle through the following views at a 5-10 second interval (as applicable to its configuration).



Meter 1

- Pulse: Meter read, utility, unit of measure (UoM)
- Encoded: Meter read, UoM, serial number (encoded)



Meter 2

- Pulse: Meter read, utility, unit of measure (UoM)
- Encoded: Meter read, UoM, serial number (encoded)

### Event Count

The Remote Reader tracks all configuration change instances, displaying the event count every 5th meter view. Example: displays as "Event 0001".

### Alerts

Active alerts appear as icons on the display. Freeze, leak, and low battery alerts are cleared automatically when the alert condition is no longer true. Tamper Alerts must be cleared manually using the mobile app.