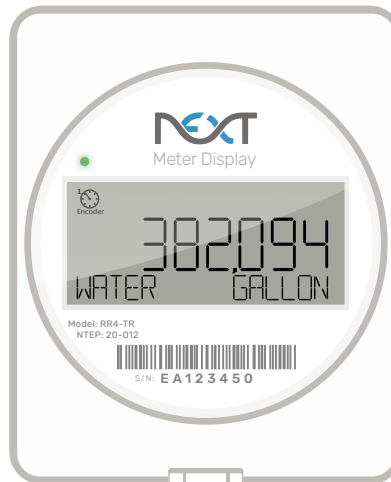


NextCentury RR4-TR Remote Reader

Wireless Meter Reading Solution with NextCentury Connect™



The [RR4-TR Remote Reader](#) is an advanced meter reading solution designed to provide high-visibility remote display and reliable data transmission. The RR4-TR supports a wide range of utility meters, including water, electric, gas, and thermal meters.

Accurate & Reliable Meter Reading

Equipped with Dual Meter+™ technology, the RR4-TR enables seamless compatibility with both encoded and pulse-output meters. The unit operates as a wireless transceiver, transmitting real-time readings to the NextCentury cloud platform for remote monitoring and data analysis.

Simple & Intuitive Display

With a consumer-friendly design, the RR4-TR ensures accurate and clear interpretation of meter readings. Its high-contrast LCD screen displays utility type, unit of measurement, and meter read data, making it ideal for both residential and commercial applications.

Certified & Secure

The RR4-TR is NTEP-certified, meeting compliance requirements for tenant meter reads. It also uses encrypted wireless communication for secure and reliable data transmission.

Key Benefits

- Real-time meter data access
- Compatible with encoded and pulse-output meters
- IP66-rated for indoor and outdoor installation
- Compact and durable design
- Wirelessly transmits meter data to the NextCentury cloud
- Supports dual-meter input
- Tamper detection alerts for enhanced security
- NTEP-certified for tenant billing compliance
- Up to 10-year battery life

Warranty

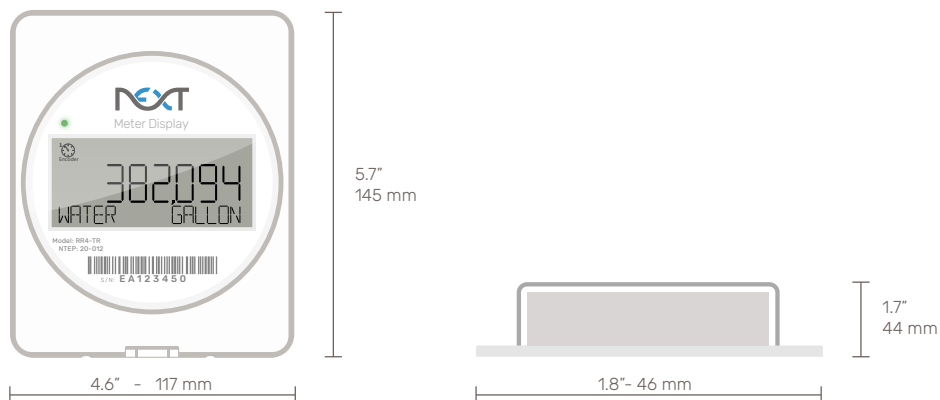
- 3-year standard warranty



Specifications & Installation Guide

Specifications

Dimensions



Approvals & Compliance

- FCC ID: 2AB81-RR4
- IC: 20949-RR4
- NTEP Certification: 20-012
- IP Rating: IP66

Wireless Communication

- Two-way NextCentury Connect™
- Frequency: 902-928 MHz Unlicensed Band
- Supports Direct Connect and Cloud Configuration

Dual Meter+ Technology

- Supports two encoded or pulse-output meters simultaneously

Battery & Power

- Pre-installed CR18505 lithium battery (field-replaceable)
- Up to 10-year battery life

Installation

- Compatible with standard single-gang wall boxes
- Mounting hole spacing: 3.5" (88.4mm)

Operating Environment

- Temperature range: -4°F to 140°F (-20°C to 60°C)
- Indoor or outdoor installation (non-submersible)

Compatible Pulse Output Meters

- Supports reed switch, solid-state relay, and open-drain types
- Active voltage sensing: Up to 16 VDC

Compatible Encoded Output Meters

- Neptune (ProRead, E-Coder, ProCoder)
- Sensus UI-1203 (Sensus, Badger, Kamstrup, and others)
- Elster/AMCO K-Frame (ABB, AMCO, Kent)
- GWf ECO (Unico, Unico2coder)

Warranty

Next Meters warrants the RR4-TR Remote Reader to be free from defects in materials and workmanship for a period of three years from date of manufacture when installed in accordance with these instructions and with limitations as detailed in the complete warranty.

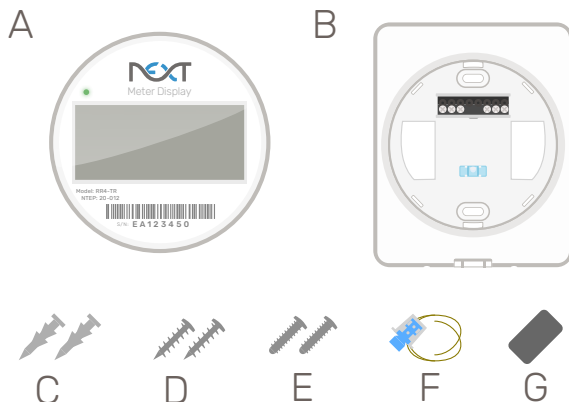
Due to continuous product improvement and the need to comply with evolving regulations, Next Meters reserves the right to modify product specifications without prior notice.

Specifications & Installation Guide



Installation

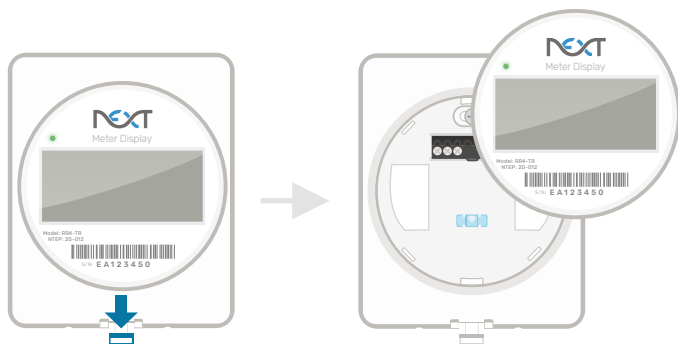
Package Contents



- A) RR4-TR Remote Reader
- B) Mounting Plate
- C) Sheetrock Anchors
- D) Wall Mount Screws
- E) Box Mount Screws
- F) Wire Security Assembly
- G) Activation Magnet

Detach from Mounting Plate

Pull down the security tab to remove the Remote Reader. Do not open the device unless replacing the battery. Disassembly is not required for installation.



Install the Mounting Plate

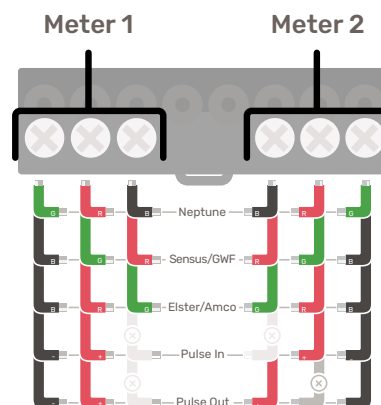
Position the mounting plate at the desired height and use the integrated level for alignment. Use included Wall Mount screws and Sheetrock Anchors to secure the mounting plate.

For optional wall box mounting, route meter wires through access holes and attach to a standard wall box using the Box Mount Screws.

Meter Wiring

The Remote Reader can be connected to one or two meters. Use Meter 1 (left 3 terminals) and Meter 2 (right 3 terminals) to connect meters to the Remote Reader's mounting plate.

Strip the meter wires to 3/16" (5 mm), insert them into the terminal block, and tighten securely with a PH-1 screwdriver.



To create a tamper-evident seal, the Security Wire Seal can be used according to your installation specifications.

Programming

The Remote Reader can be programmed using either the NCSS Mobile App or the Online Web Portal, depending on your setup. The NCSS Mobile App allows for quick, in-field programming and configuration.

Setup and configuration can also be done via the Online Web Portal or NCSS Mobile App if a NextCentury Gateway and internet connection are available.

Configuration

The NCSS Mobile App allows technicians to connect wirelessly to the Remote Reader to set the configuration.

Features include configuring the meter's unit of measure and multiplier, selecting the utility type, entering an initial meter read and clearing a tamper alert.



Specifications & Installation Guide

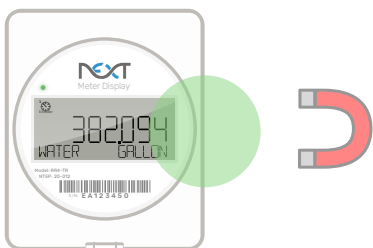


Installation (cont.)

Magnet Activation

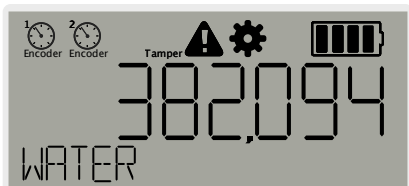
To connect to the Remote Reader wirelessly, log in to the NCSS Mobile App and navigate to the Direct Connect tool.

Swipe a magnet past the Remote Reader's activation zone to initiate a check-in. A gear icon will appear on the display when successfully activated.



The Remote Reader can now connect directly to your mobile device. It will also check in with a programmed Gateway and apply updates.

LCD Display



The Remote Reader will cycle through the following views at a 5-10 second interval (as applicable to its configuration).

- Meter 1**
 - Pulse: Meter read, utility, unit of measure (UoM)
 - Encoded: Meter read, UoM, serial number (encoded)
- Meter 2**
 - Pulse: Meter read, utility, unit of measure (UoM)
 - Encoded: Meter read, UoM, serial number (encoded)

Event Count

The Remote Reader tracks all configuration change instances, displaying the event count every 5th meter view. Example: displays as "Event 0001".

Alerts

Active alerts appear as icons on the display. Freeze, leak, and low battery alerts are cleared automatically when the alert condition is no longer true. Tamper Alerts must be cleared manually using the mobile app.

Tamper

Tamper Alert: Device has been removed from mounting plate



Leak or Freeze Alert: Leak or freezing temperatures currently detected



Low Battery Alert: Replace battery within the next 4-6 months.

Radio Signal Strength

An RF indicator icon appears after the Remote Reader checks in. This indicator provides quick feedback to a technician of network signal strength.



Radio Indicator: Displays 1-3 bars based on the most recent check-in.

Utility Types

The configured utility type appears in the bottom left corner of the display.

- All Water
- Cold Water
- Hot Water
- Commercial Water
- Gas
- Electric

Units of Measure

The unit of measure appears in the bottom right corner of the screen.

- gallons (water)
- liters (water)
- cubic feet (water, gas)
- cubic yards (water, gas)
- cubic meters (water, gas)
- kWh (electric)
- Wh (electric)
- BTU (thermal)

Contact Information

For additional information or assistance, please visit our Support Center or contact our Product Support Team:

support.nextmeters.com

(844) 538-8203

support@nextmeters.com